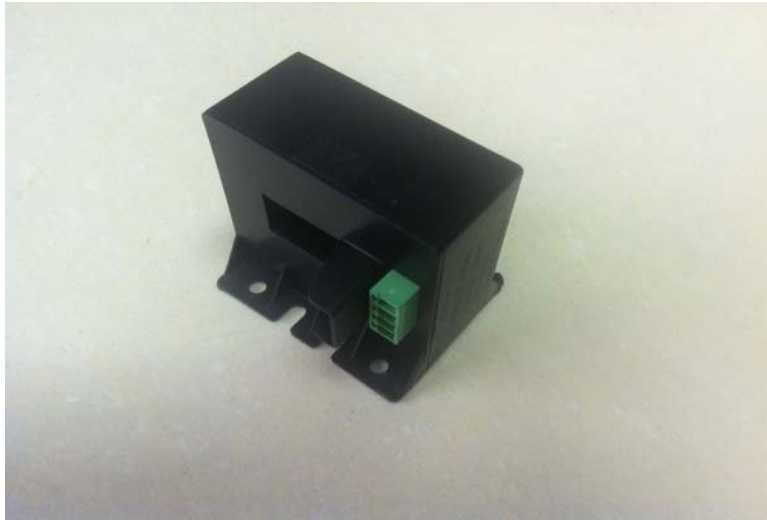


3E

Hall Effect Current Transducer

Shenzhen 3E Sensor Co., Ltd. <http://www.3ese.com>



Type:	SZ132	300A
Primary nominal Current RMS (I _{pn} , Amp)		300A
Primary current Measuring range (I _{pm} , Amp)		±640A

Electrical data

V _c Supply Voltage		±12V~±15V DC (±5%)
R _m Measuring Resistance (@±15V DC@85 °C@±640A)		0-10 Ω
Coil Resistance @85 °C		53 Ω
Secondary Nominal Current RMS		100mA or 150mA
Conversion Ratio		1:3000 or 1:2000
Current Consumption		25mA + output
X Overall Accuracy 1)@I _{pn} TA=25°C @ ±15V		±1%
ε L Linearity Error1) (@0... ±I _{pn})		<±0.1%
VOE Electric Offset Current @I _p =0, TA =25°C		<±0.15mA
VOE Magnetic Offset Voltage@I _p =0, TA =25°C after 3* I _{pn} for 1 minute		<±0.15mA
TCVOE Thermal Drift of VOE TA =-40 °C... 85 °C		<±0.2mA (typical) <±0.5mA (Max.)
T _r Response time @ I _p *90%		<1 μs
di/dt di/dt Accurately Followed		>50A/us
BW Band Width @-3db		DC to 100Khz
VIS Isolation Voltage@50Hz, 1minute		5KV

General data

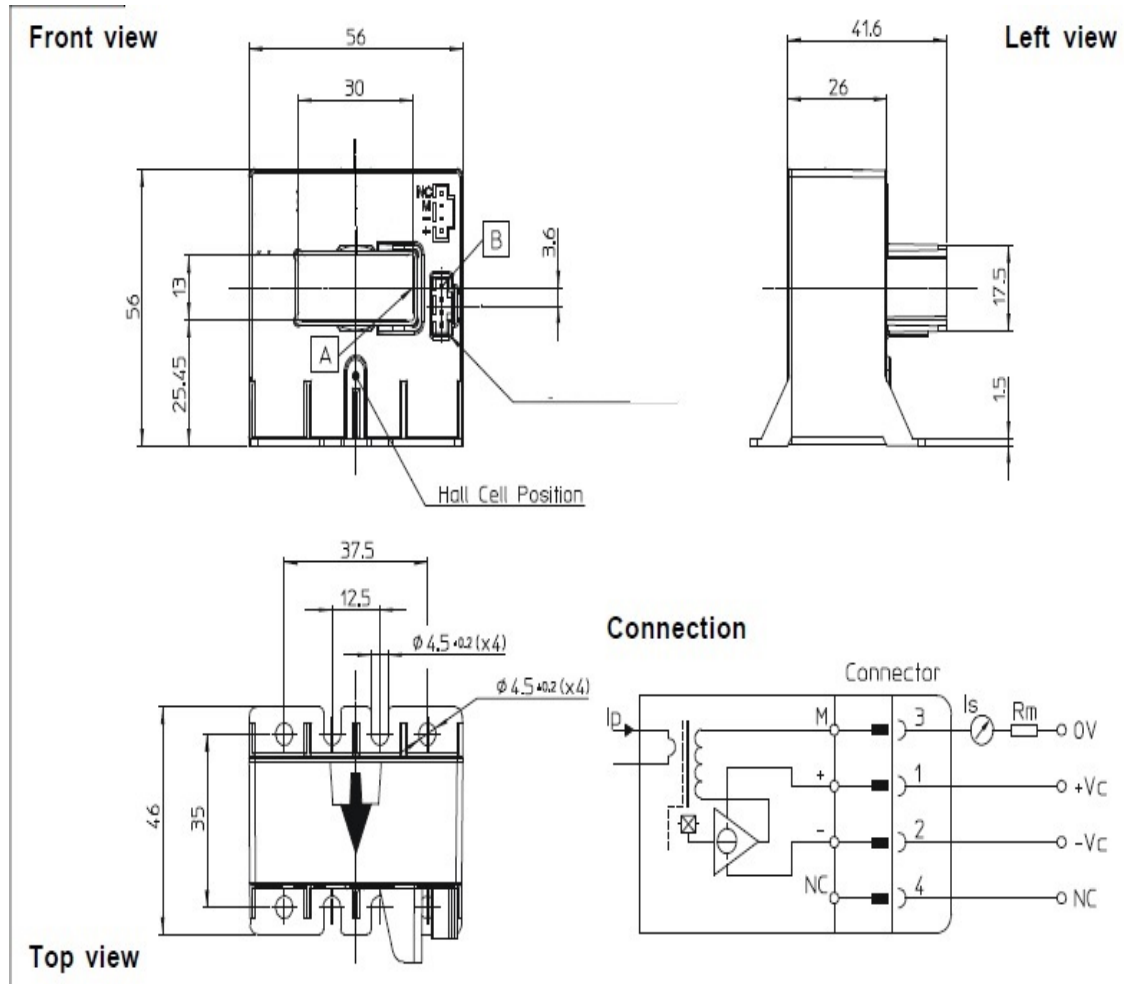
TA Ambient Operating Temperature		-40°C..+85°C
Ts Ambient Storage Temperature		-45°C..+90°C
M mass		140g
Housing		PA66+GS15%
Notes		1) excludes the electrical offset 2) standard EN50155:2001

3E

Hall Effect Current Transducer

Shenzhen 3E Sensor Co., Ltd. <http://www.3ese.com>

dimension (mm)



Mechanical characteristics

General tolerance: 0.5mm

Primary through-hole: 30mm*13mm

Connector: Terminal 3.81

3E reserves the right to carry out the modifications without prior notice

<http://www.3ese.com> Page 2 of 2