

3E

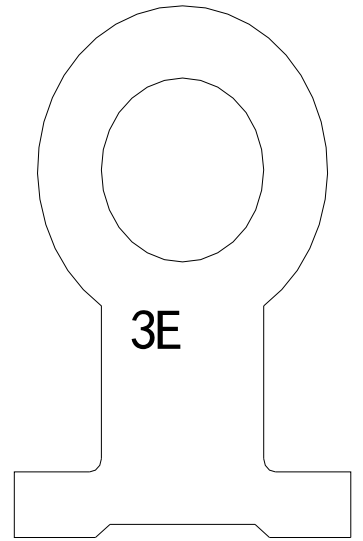
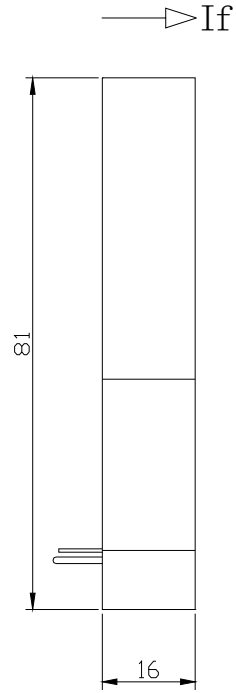
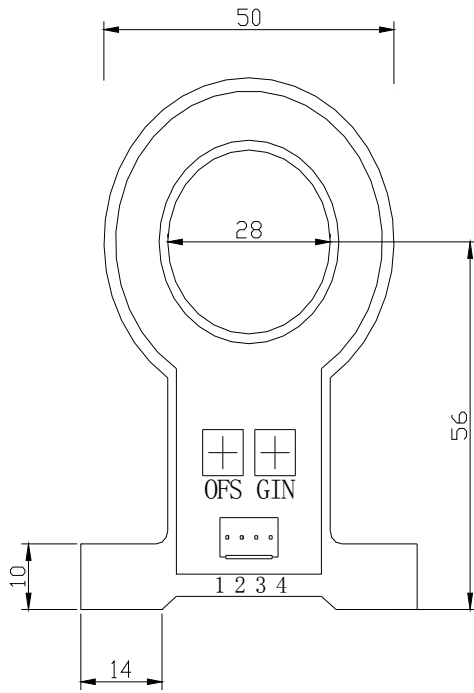
HALL EFFECT CURRENT TRANSDUCER

SC128 Serials

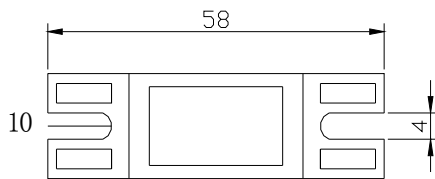
(closed-loop)

| Part No. | SC128-300A |
|-------------------------------|-------------------------------------|
| Specs. (@25°C) | |
| Nominal Current(In) | ±300A |
| Measuring current range(Peak) | 0...±500A |
| Coil turns ratio | 1:2000 |
| Coil resistor(@In) | @12VDC 37 Ω (Max) @15VDC 56 Ω (Max) |
| Secondary nominal current | ±150mA |
| Load Resistor (@In) | 10-15 Ω |
| Supply Voltage | ±12V--±15V DC(±5%) |
| Accuracy | ±0.5% |
| Linearity | ±0.1% |
| Offset current | ±0.2mA |
| Temperature drift of output | <±0.02%/°C |
| Temperature drift of offset | <±0.01%/°C (IF=0) |
| Hysteresis error (If=FS→0) | <0.5mA |
| Band width | DC - 150 KHz |
| Response time | <1μS |
| Isolation voltage | 2.5KV rms/50Hz/1min |
| Consumption current | 13mA+Iout |
| Operating temperature range | -40°C~+85°C |
| Storage temperature range | -60°C~+90°C |

Dimensions: (mm)



引脚说明



| | |
|---|-----|
| 1 | V+ |
| 2 | GND |
| 3 | V- |
| 4 | OUT |